

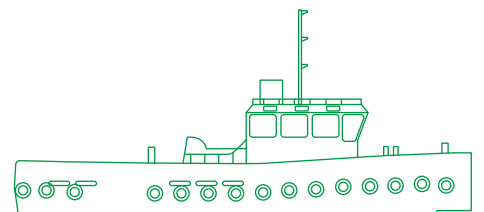


مبارك البحرية Mubarak Marine



Hamad Harbour tug

At 17 m in length, this highly manoeuvrable harbour tug can hold a crew of up to 4 people. It is equipped with two Weichai marine diesel engines, produces a bollard pull of over 8 tons, and is equipped with two firefighting monitors.



Registration

Year of build	2003
Builder	Dubai Ship Building & Engineering LLC
Port of registry	Dubai
Official number	4902
Call sign	A6E2613
Class	Tasneef
Operator	Mubarak Marine LLC

Dimensions

Length overall	17.1 m
Breadth overall	5.2 m
Breadth moulded	4.9 m
Depth	2.7 m
Draft	1.6 m

Machinery/propulsion

Main engines	2x Weichai marine diesel engine 368 kW @ 1800 RPM
Generators	2x Perkins engine type 2490/1500 31 kW
Propeller	2x 62 inches @ 4-blade
FW/GS pump	30 m ³ /h
FO pump	15 m ³ /h

Tonnage

GRT	50 t
-----	------

Performance

Cruising speed	10 knots
Bollard pull	8.8 mt
Quick release hook	Yes

Accommodation

Total	4 persons
-------	-----------

Firefighting/safety equipment

Life rafts	1x 6 persons
Life jacket/life buoy	6 nos/3 nos
Fire extinguisher	8 nos
Life ring	2 nos
Fi-Fi monitor	Remote control fire, 2x monitor nozzle

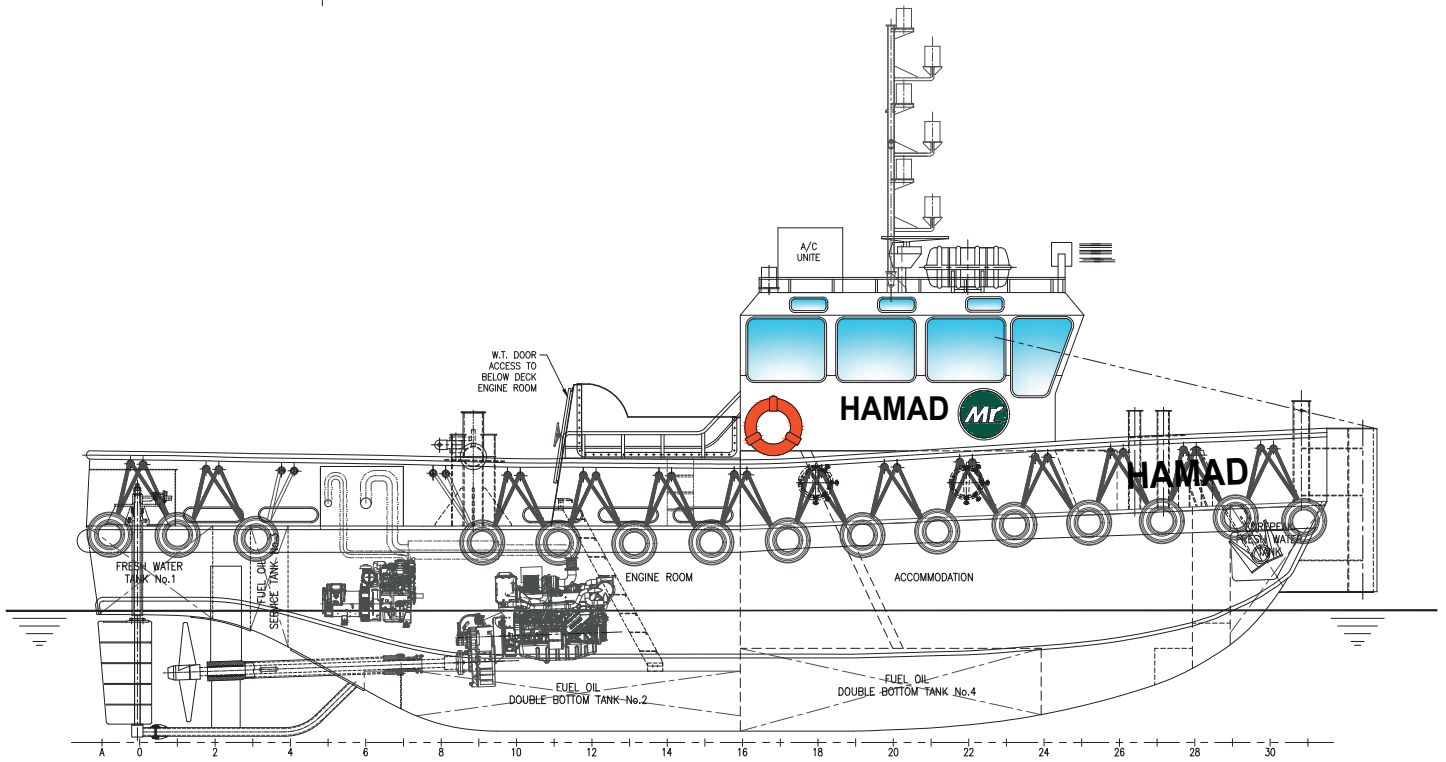
Navigation/communication equipment

Magnetic compass	1x Plastimo
Radar	1x Koden Genesis MU-10, 1x Samyung SMR 3600 color radar
GPS + AIS system	1x AMEK Camino 201, 1x Jotron AIS display unit
Chart plotter	1x ONWA
Auto pilot	1x Comnav P4 auto pilot
Navigational light panel	P12 WH den quden vetus
GPS	1x Garmin GPS75, 1x Koden KGP-913, 1x Furuno GP-39
Echo sounder	1x JMC V6202, 1x Hondex (HE-881)
Navtex receiver	1x Samyung SNX-200
SART	1x Samyung SAR9
VHF (fixed)	Sailor VHF RT2048, 1x Simrad R320
VHF (portable)	1x ICOM ICM 32, 1x Standard GX-1256S, NAVC (AN-507M)
Satellite phone	+88 216 888-44095
Satellite fax	+88 216 888-44096
Mobile	+971 52 903 3583

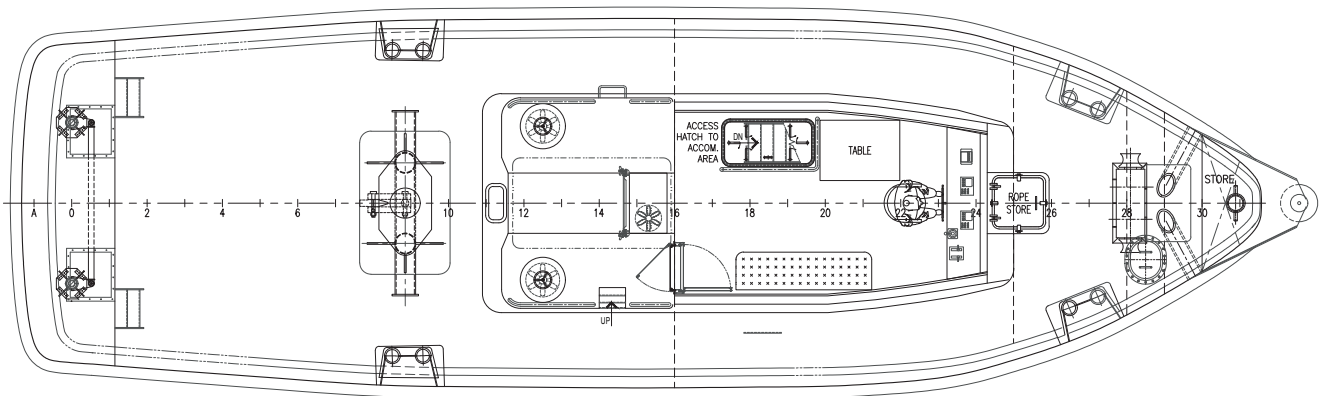
Capacities

Fuel oil	3226 imp gal
Fresh water	8 mt
Fuel consumption	
Towing/free running	669 imp gal/451.6 imp gal
Fresh water consumption	1 mt

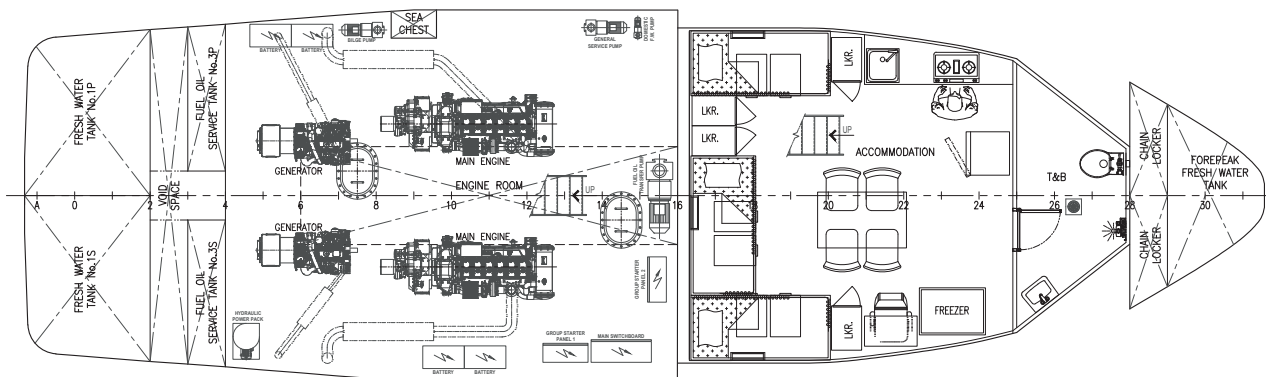




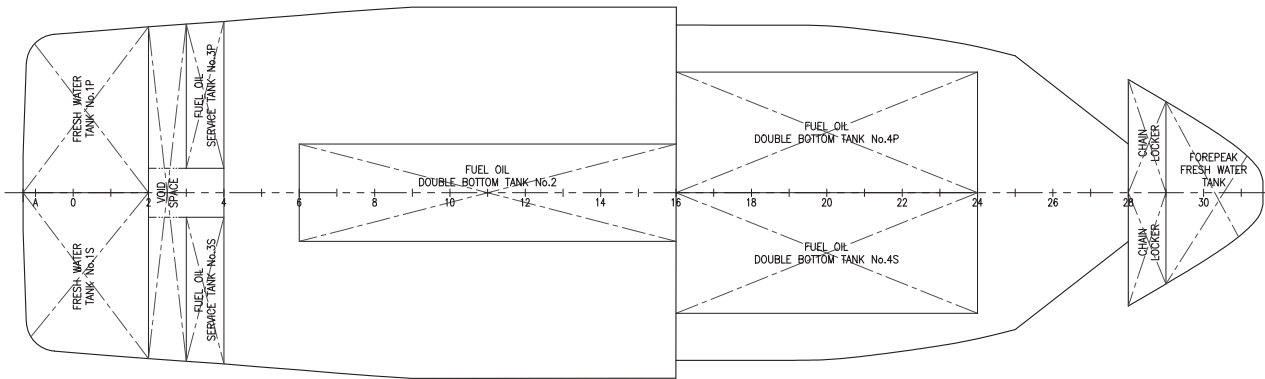
Outboard profile



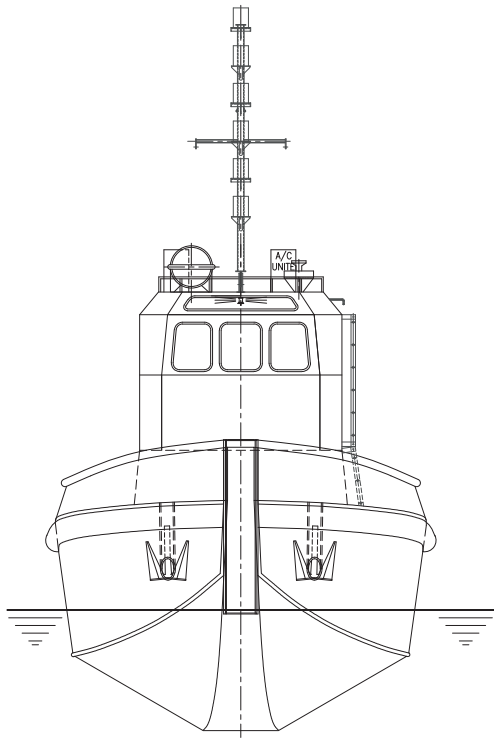
Main deck plan



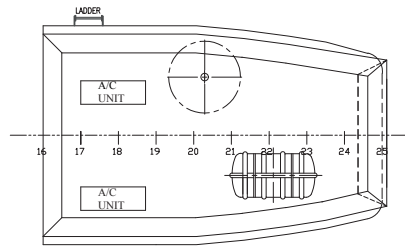
Below main deck plan



Tank plan



Fore view



Wheelhouse top

Mubarak Marine LLC | PO Box 7220 | Dubai Maritime City | UAE

T+971 4 586 5200 | F +971 4 586 5299 | marketing@mubarak.ae | mubarakmarine.com

Revision February 2023 | All technical details are provided as a guide only and are subject to owner's changes without notice